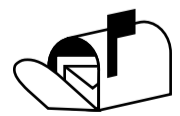


Publix Guesthouse Berlin Neukölln



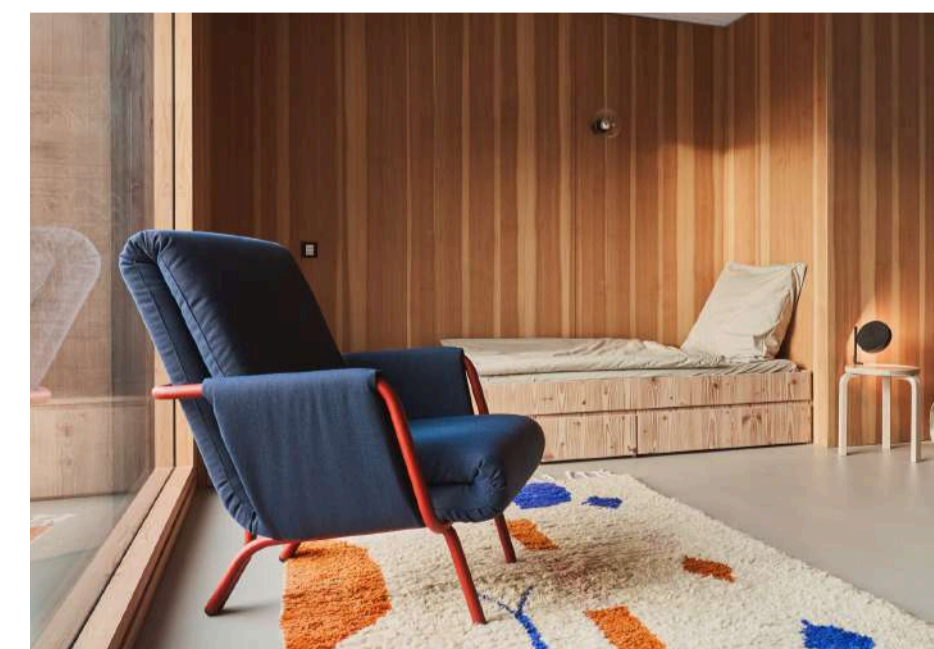
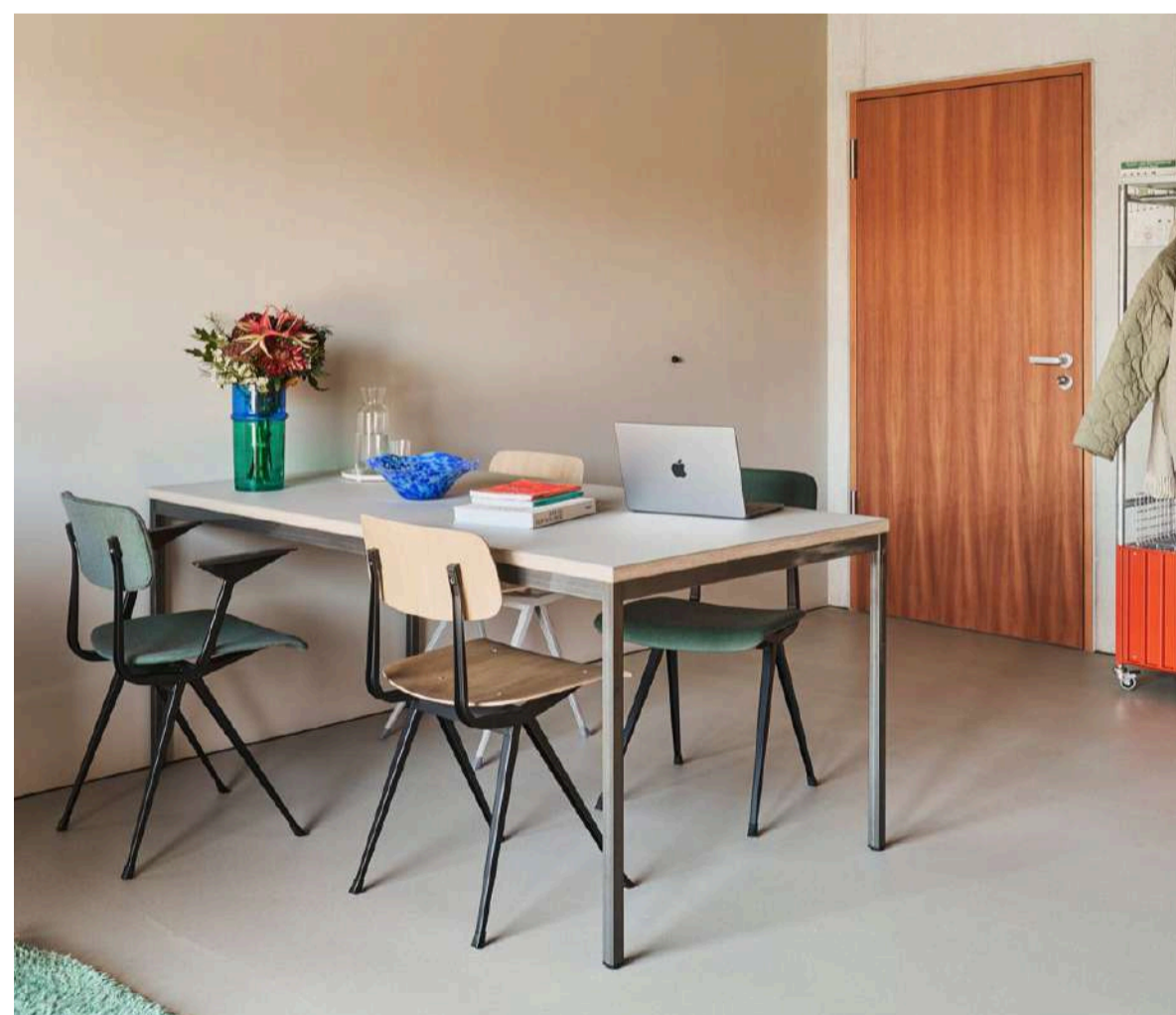
Any questions?
guesthouse@publix.de

Publix Guesthouse Berlin Neukölln

Our guesthouse on the fifth floor of the Publix building offers sweeping views over the rooftops of the neighborhood and the treetops of the park all the way to Tempelhofer Feld.

The non-smoking rooms, each with a private bathroom, are ideal for focused work, whether alone or in a small team. All guests have access to a fully equipped kitchenette and a complimentary minibar. At the same time, the guesthouse is an ideal base for exploring the diverse cultural and culinary scene of Neukölln and Kreuzberg. Both S-Bahn and U-Bahn stations are within easy walking distance, providing quick connections to other parts of the city.

For your comfort, we offer a room adapted for people with reduced mobility.



Overnight stays

Retreats

Workshops

Artist-in-Residency Programmes

Project work



Publix Guesthouse
Hermannstr. 90
D-12051 Berlin

Single Room / price per night

125 €

Double Room / price per night

142 €

Prices additional 7.5% city tax and VAT.

We offer discounts for non-profit organisations and long-term stays.



Have a wonderful stay!

→ Check-in and Check-out

Check-in: 2 p.m. – 5 p.m.

Check-out: Before 11 a.m.

Later arrival time can be arranged separately.

→ Room Facilities

Number: 7 single rooms / 2 double rooms

Occupancy: 1–2 people

Surface area: 22–41 m²

Bed Size: 90 × 200 cm / 180 × 200 cm

Bathroom with shower, Free Wifi, Wardrobe, Fan,
Free minibar, Non-Smoking, Pets are not allowed

→ Breakfast and Lunch

Mon-Fri, 8 a.m. – 5 p.m. at Publix Kantine
(not included)

→ Any questions?



Jasper Silbernagel &
Torge Polte-Distelhoff

guesthouse@publix.de